



MReye Flipper[®]

DETACHABLE EMBOLIZATION COILS

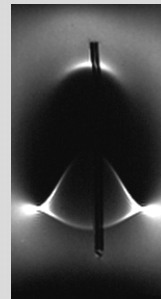




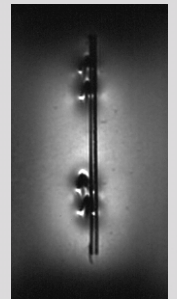
MReye Flipper[®]

DETACHABLE EMBOLIZATION COILS

The MReye Flipper coil is designed with a detachment zone that allows the clinician to perform effective embolization in anatomy where control and precise placement are critical. This is on top of the MR benefits of the super alloy used in the construction of the coils. MReye Flipper Coils can be used in field strengths up to 3.0 Tesla, while providing a significant reduction in MR signal void, making MReye Flipper coils ideal for patients who may need an MR scan.



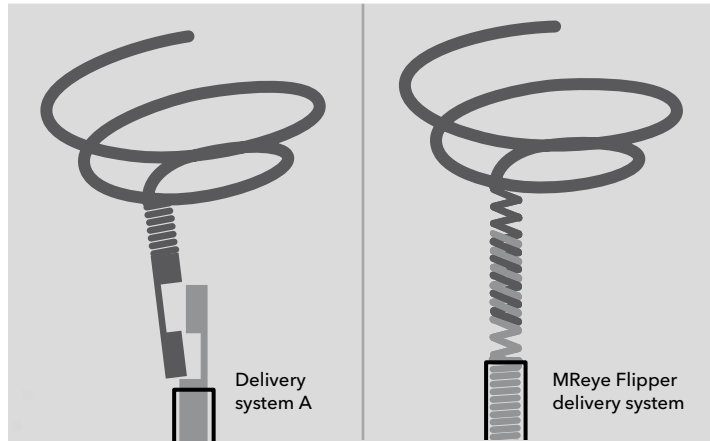
Coil manufactured of stainless steel



Coil manufactured of MReye super alloy

The coil that keeps MR in the picture

MReye Flipper coils are made from a super alloy that provides the same staying power in high-flow vessels as stainless steel coils, without extreme signal void, making the surrounding anatomy easier to see under MR.



Fibers or no fibers?

That depends: How long do you want to wait?

Studies by Barth et al¹ show that a single fibered coil like MReye Flipper can achieve initial occlusion faster than multiple non-fibered devices. Evidence also suggests it can be less vulnerable to recanalization, creating a more secure occlusion over time.

Bigger coils = bigger possibilities

Unlike other coils that are only available in a .018 inch diameter, MReye Flipper is available in .035 inch diameter. In larger peripheral vessels volume can be a critical factor to the success of the embolization. Doubling the coil size means you occlude large vessels faster and more effectively.

1. Barth KH, Strandberg JD, Kaufman SL, et al. Chronic vascular reactions to steel coil occlusion devices. *Am J Roentgenol*. 1978;131(3):455-8.

Truly locked-in delivery

Some competitive coil systems only control the coil while it is still safely inside the catheter.

MReye Flipper is different. Its unique delivery system maintains control of the coil until you're ready to deploy. This is true even after the coil has been fully advanced beyond the catheter tip. That means you can adjust your already-deployed coil until it's exactly where you want it, then release it when you're ready.

MREYE FLIPPER DETACHABLE EMBOLIZATION COILS²

Global Product Number	Order Number
G48351	IFMWCE-35-3-3
G48352	IFMWCE-35-4-3
G48353	IFMWCE-35-5-3
G48354	IFMWCE-35-5-5
G48355	IFMWCE-35-6-5
G48356	IFMWCE-35-6-6.5
G48357	IFMWCE-35-8-5
G48358	IFMWCE-35-8-6.5
G48359	IFMWCE-35-8-8
G48360	IFMWCE-35-10-6.5
G48361	IFMWCE-35-10-8
G48362	IFMWCE-35-12-8

2. Designed for use with Flipper Delivery System.

FLIPPER DELIVERY SYSTEM

Global Product Number	Order Number
G12912	FDW-35-80
G12913	FDW-35-110

RECOMMENDED PRODUCT ACCESSORIES

Check-Flo® Introducer Set

G08434	RCF-5.0-21-7-J
G12424	RCFN-5.0-18-MPIS-NT

Torcon NB® Advantage Selective Catheter

G10455	HNB5.0-NT-65-P-NS-MPA
G09660	HNB5.0-NT-100-P-NS-MPA

In order to obtain stability during coil introduction a 5.0 French or larger, non-tapered (NT) end hole, multipurpose catheter without sideports is recommended. The catheter must have a minimum I.D. of .041 inches or larger.

MREYE FLIPPER IS MR CONDITIONAL

Through non-clinical testing, MR eye Embolization Coils have been shown to be MR conditional at static magnetic field strengths of 3.0 Tesla or less, a maximum spatial gradient of 330 gauss/cm, and a maximum whole body averaged specific absorption rate (SAR) of 2.0 W/kg for 20 minutes of MR. MR eye Embolization Coils will not migrate in the MR environment. Non-clinical testing has not been performed to rule out the possibility of device migration at static magnetic field strengths higher than 3.0 Tesla and a maximum spatial gradient higher than 330 gauss/cm.

In this testing, MR eye Embolization Coils produced a temperature rise of ≤ 0.6 degrees C at a maximum whole body averaged specific absorption rate (SAR) of 2.0 W/kg for 20 minutes of MR. The effect of heating in the MR environment for other conditions, multiple coils or overlapping coils is unknown.

MR image quality may be compromised if the area of interest is in the same area or relatively close to the position of the MR eye Embolization Coil.



www.cookmedical.com

COOK MEDICAL INCORPORATED

P.O. Box 4195, Bloomington, IN 47402-4195 U.S.A.
Phone: 812.339.2235, Toll Free: 800.457.4500, Toll Free Fax: 800.554.8335

COOK (CANADA) INC.

111 Sandiford Drive, Stouffville, Ontario, L4A 7X5 CANADA
Phone: 905.640.7110, Toll Free: 800.668.0300

WILLIAM A. COOK AUSTRALIA PTY. LTD.

Brisbane Technology Park, 12 Electronics Street, Eight Mile Plains
Brisbane, QLD 4113 AUSTRALIA, Phone: +61 7 38 41 11 88

WILLIAM COOK EUROPE ApS

Sandet 6, DK-4632, Bjaeverskov, DENMARK, Phone: +45 56 86 86 86

© COOK 2007 PI-BM-MRF-EN-200710