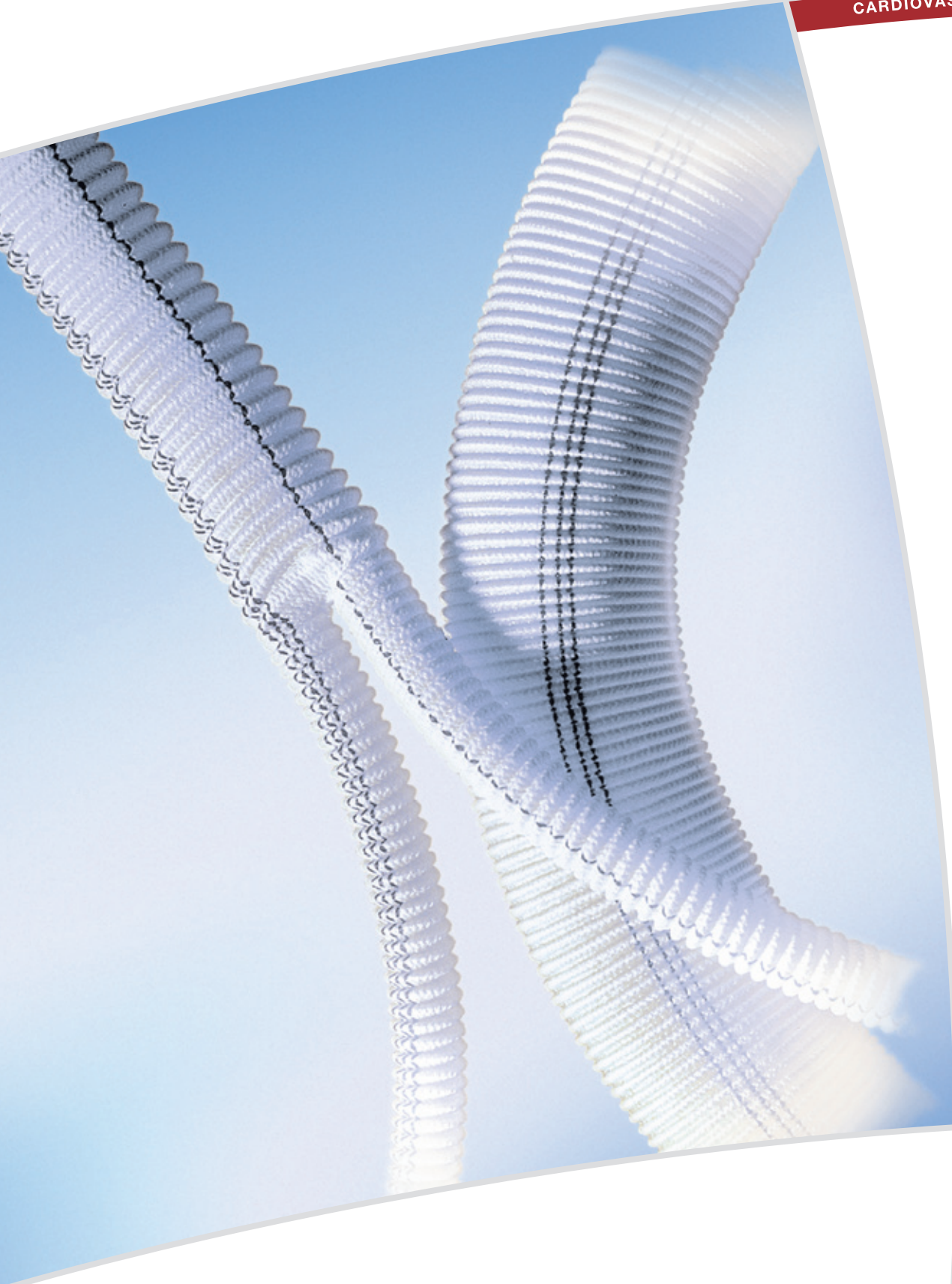


**INTERGARD WOVEN**

CARDIOVASCULAR



# THE OPTIMAL CHOICE FOR THORACIC VASCULAR RECONSTRUCTION

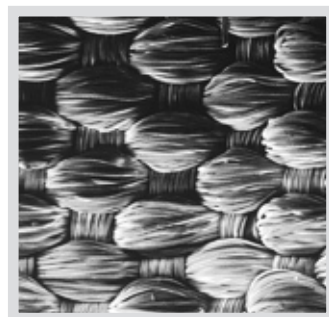
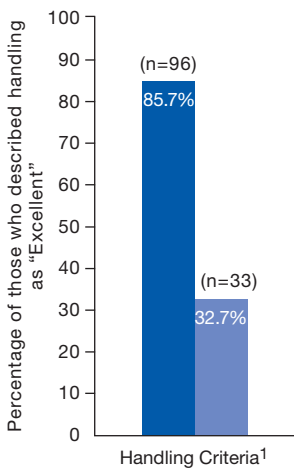
## INTERGARD WOVEN

- Exclusive weave design produces woven grafts that handle and suture like a knitted graft
- Outstanding strength and long-term durability
- A complete range of sizes, including specialty grafts for aortic arch and thoracic aorta repair and replacement
- Proven clinical safety and efficacy

INTERGARD Woven collagen coated grafts utilize low twist, highly filamentous yarns and INTERGARD proprietary collagen coating process. This process produces a woven graft which handles and sutures like a knit and has exceptional strength.

INTERGARD Woven limits the velour to the external surface of the graft to enhance secure attachment of perigraft tissue. The internal surface of the graft has a well-organized, texturized surface. This provides a smooth foundation to promote secure pseudointima growth and minimize thrombus formation.

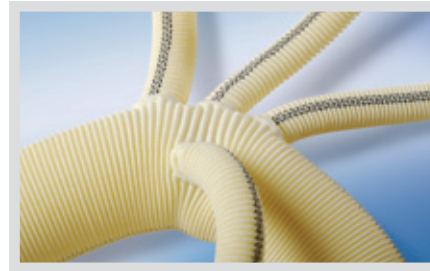
- Excellent strength and suturing characteristics
- “A woven which handles like a knit”



SEM of INTERGARD graft internal flow surface

- INTERGARD Woven
- Control Grafts (gelatin sealed and collagen impregnated grafts)

**INTERGARD Woven is available in a complete range of sizes in both straights and bifurcates.** A complete range of specialty woven grafts is also available for aortic arch replacement, and for aneurysmal and dissecting repair of the thoracic aorta.



### Aortic Arch

- Pre-sewn branches are designed for total replacement of all diseased segments
- Anatomically correct angle of branches is designed for easy suturing to the host vessels and to prevent graft kinking
- 30 cm length perfusion branch designed to be positioned outside the operative field for improved control and visualization



### HemaBridge

- The INTERGARD HemaBridge is designed to allow an easier, more reliable, and less time consuming technique
- Pre-sewn perfusion branch allows for antegrade arterial perfusion, and can be used to replace the brachiocephalic artery in a partial arch replacement



### Thoracic Aortic Graft

- A woven graft with and uncrimped section to reconstruct or replace the thoracic ascending aorta
- Outstanding handling and suturability
- Large choice of sizes

1. Marc Schepens, M.D., St. Antonius Hospital, Nieuwegein, Netherlands, Comparison of Woven Collagen Coated Vascular Grafts in the Thoracic Position.

# INTERGARD WOVEN PRODUCT INFORMATION

## PHYSICAL AND MECHANICAL PROPERTIES\*

Woven	
Coated polyester fabric	Cross-linked Type I bovine collagen
Water permeability*	$\leq 5 \text{ ml} \cdot \text{cm}^{-2} \cdot \text{min}^{-1} @ 120 \text{ mmHg}$
Wall thickness**	0.38 mm
45° suture retention**	2.53 kg

\* Testing performed per ANSI/AAMI/ISO 7198:1998/2001.

\*\* Test results are for customer evaluation only and do not represent a product specification.

## STRAIGHT

### 15 cm length:

Diameter	Reference
12 mm	IGW0012-15
14 mm	IGW0014-15
16 mm	IGW0016-15
18 mm	IGW0018-15
20 mm	IGW0020-15
22 mm	IGW0022-15
24 mm	IGW0024-15
26 mm	IGW0026-15
28 mm	IGW0028-15
30 mm	IGW0030-15
32 mm	IGW0032-15
34 mm	IGW0034-15
36 mm	IGW0036-15

### 30 cm length:

Diameter	Reference
6 mm	IGW0006-30
8 mm	IGW0008-30
10 mm	IGW0010-30
12 mm	IGW0012-30
14 mm	IGW0014-30
16 mm	IGW0016-30
18 mm	IGW0018-30
20 mm	IGW0020-30
22 mm	IGW0022-30
24 mm	IGW0024-30
26 mm	IGW0026-30
28 mm	IGW0028-30
30 mm	IGW0030-30
32 mm	IGW0032-30
34 mm	IGW0034-30
36 mm	IGW0036-30
38 mm	IGW0038-30

### 60 cm length:

Diameter	Reference
22 mm	IGW0022-60
24 mm	IGW0024-60
26 mm	IGW0026-60
28 mm	IGW0028-60
30 mm	IGW0030-60
32 mm	IGW0032-60

## BIFURCATED

### 50 cm length:

Diameter	Reference
12 x 6 mm	IGW1206
14 x 7 mm	IGW1407
16 x 8 mm	IGW1608
18 x 9 mm	IGW1809
20 x 10 mm	IGW2010
22 x 11 mm	IGW2211
24 x 12 mm	IGW2412

## AORTIC ARCH



Diameter (mm)	Length (cm)	Reference
20x10x8x8x10	50x30x30x30x30	HEWAA2010080810/1
22x10x8x8x10	50x30x30x30x30	HEWAA2210080810/1
24x10x8x8x10	50x30x30x30x30	HEWAA2410080810/1
26x10x8x8x10	50x30x30x30x30	HEWAA2610080810/1
28x10x8x8x10	50x30x30x30x30	HEWAA2810080810/1
30x10x8x8x10	50x30x30x30x30	HEWAA3010080810/1
32x10x8x8x10	50x30x30x30x30	HEWAA3210080810/1
34x10x8x8x10	50x30x30x30x30	HEWAA3410080810/1

## HEMABRIDGE



Diameter (mm)	Length (cm)	Reference
20 x 10	35 x 40	HEW2010BRIDGE
22 x 10	35 x 40	HEW2210BRIDGE
24 x 10	35 x 40	HEW2410BRIDGE
26 x 10	35 x 40	HEW2610BRIDGE
28 x 10	35 x 40	HEW2810BRIDGE
30 x 10	35 x 40	HEW3010BRIDGE
32 x 10	35 x 40	HEW3210BRIDGE
34 x 10	35 x 40	HEW3410BRIDGE
36 x 10	35 x 40	HEW3610BRIDGE

## THORACIC AORTIC GRAFT

### 15 cm length:

Diameter	Length of uncrimped section	Reference
24 mm	3 cm	IGW0024-15NGG
26 mm	3 cm	IGW0026-15NGG
28 mm	3 cm	IGW0028-15NGG
30 mm	3 cm	IGW0030-15NGG
32 mm	3 cm	IGW0032-15NGG
34 mm	3 cm	IGW0034-15NGG

## MCV Headquarters

MAQUET Cardiovascular LLC  
45 Barbour Pond Drive  
Wayne, NJ 07470  
Phone: (+1) 408-635-0700 or 888-880-2874  
Fax: (+1) 408-635-0717 or 888-899-2874  
Email: VSsurgery@maquet.com  
www.maquet.com/vascular

Additional Contact Address Label Here

# MAQUET

GETINGE GROUP

MAQUET GmbH & Co. KG  
Kehler Straße 31  
D-76437 Rastatt, Germany  
Phone: +49 (0) 7222 932-0  
Fax: +49 (0) 7222 932-571  
Service-Hotline: +49 (0) 7222 932-745

#### For local contact:

Please visit our website  
[www.maquet.com](http://www.maquet.com)

GETINGE GROUP is a leading global provider of products and systems that contribute to quality enhancement and cost efficiency within healthcare and life sciences. We operate under the three brands of ArjoHuntleigh, GETINGE and MAQUET. ArjoHuntleigh focuses on patient mobility and wound management solutions. GETINGE provides solutions for infection control within healthcare and contamination prevention within life sciences. MAQUET specializes in solutions, therapies and products for surgical interventions and intensive care.

MCV00004539